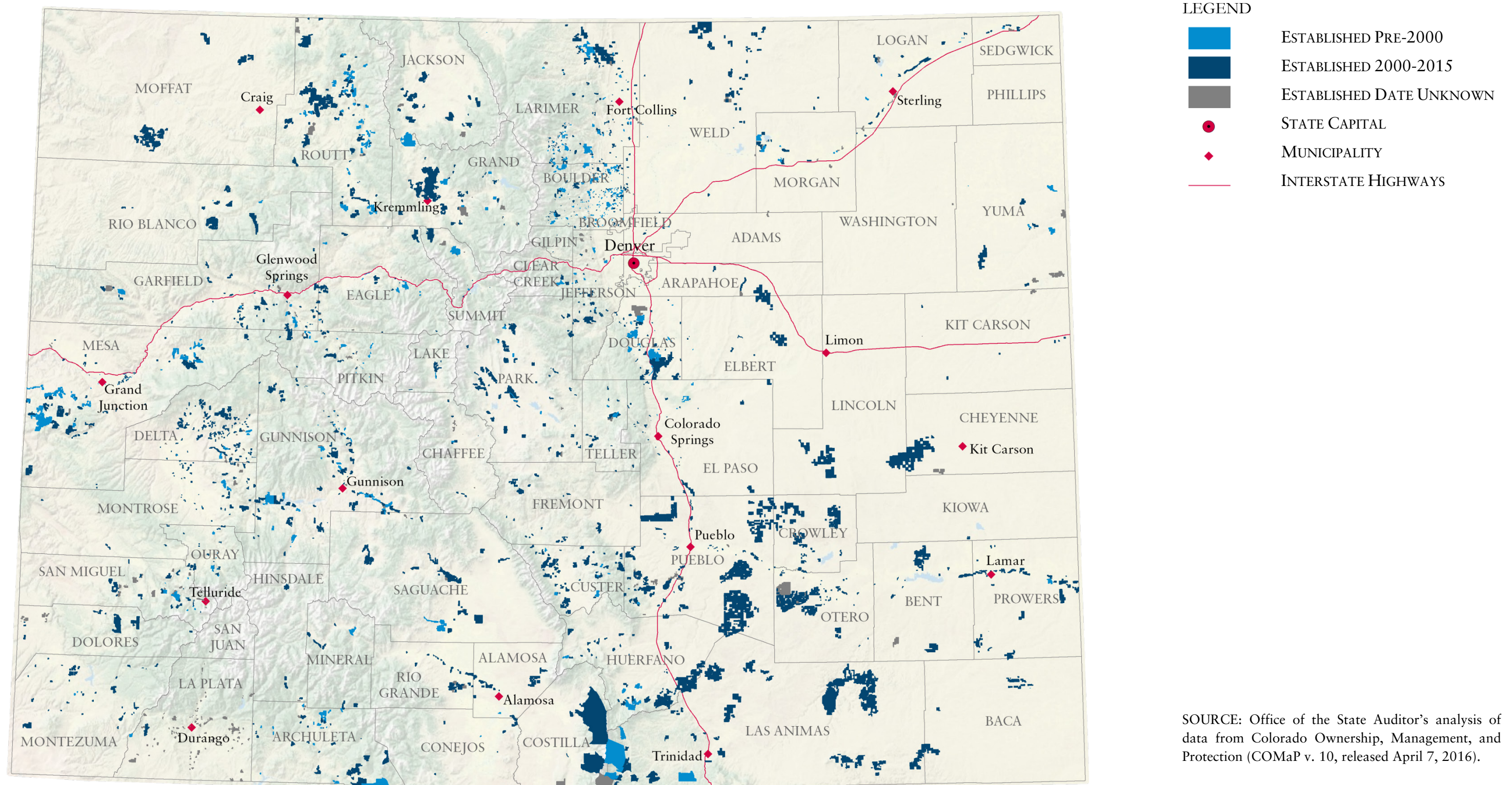
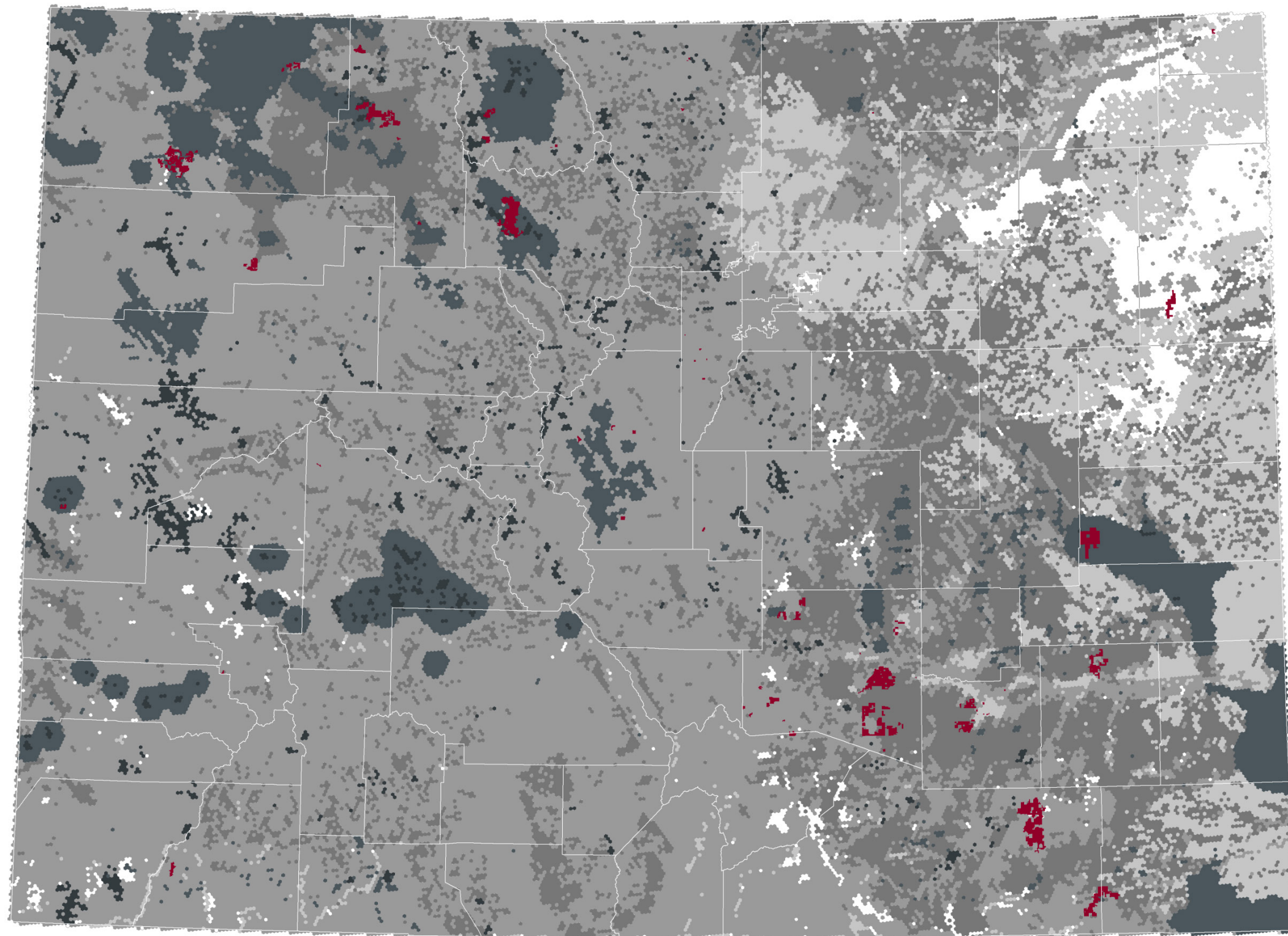


EXHIBIT 1.3. CONSERVATION EASEMENTS ON PRIVATE LANDS IN COLORADO



CONSERVATION EASEMENTS ON PRIVATE LANDS ENCUMBERED BETWEEN 2011 AND 2015 COMPARED TO AREAS CATEGORIZED BY THE CRUCIAL HABITAT ASSESSMENT TOOL



LEGEND

- CONSERVATION EASEMENT ESTABLISHED 2011-2015
- CRUCIAL HABITAT CATEGORIES:
- CATEGORY 1
- CATEGORY 2
- CATEGORY 3
- CATEGORY 4
- CATEGORY 5
- NO CATEGORY

This map compares the locations of 114 conservation easements created from January 2011 to June 2015 (the most recent month in which an easement was created in the available data) to the areas defined by the Crucial Habitat Assessment Tool. Sponsored by the Western Association of Fish and Wildlife Agencies, the Crucial Habitat Assessment Tool ranks each geographic area containing crucial habitats for wildlife on a scale of one to five, with Category 1 representing rare or fragile areas considered essential to maintaining the viability or diversity of wildlife species, and Category 5 representing areas likely to have significant wildlife values but unknown levels of importance in meeting conservation objectives. Areas with no ranking do not contain habitats for any Tier 1 Species of Greatest Conservation Need as defined by the *State Wildlife Action Plan*.

SOURCE: Office of the State Auditor's analysis of data from Colorado Ownership, Management, and Protection (COMaP v. 10, released April 7, 2016) and the Crucial Habitat Assessment Tool.